

# CAROLINA MANTIS

MANTODEA: MANTIDAE

*Stagmomantis carolina*

**Did you know?** The Carolina mantis is the state insect of South Carolina!

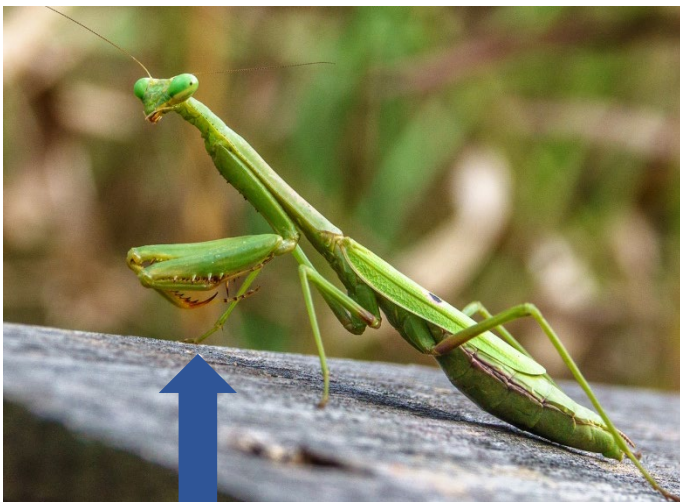
**Did you know?** Mantids are closely related to cockroaches, termites, and grasshoppers! In the past, these insects were all in the same Order.

**Did you know?** The front legs of mantids are raptorial, or grasping! The femora are enlarged, and if you look closely, you can see the spines on the tibiae and femora to hold prey in place.

**Did you know?** Carolina mantids, like all mantids, are predatory both as nymphs and adults! They are generalist predators, which means they eat anything they can catch. Large mantids can even eat small hummingbirds!

**Did you know?** While female mantids have a bad reputation, they don't always eat the male when they mate—only about a quarter of the time!

## ***Look and see!***



The spines on the forelegs of this adult female mantis help her to capture and keep prey!



Can you tell that this young Carolina mantis isn't an adult? (Hint: look for wings!)



Credits:

Photos: John G. McHaffie ([inaturalist.org/people/jgm](https://www.inaturalist.org/people/jgm)), adult female lateral; Brett Jackson ([inaturalist.org/people/brettjackson](https://www.inaturalist.org/people/brettjackson)), adult female on tree; Josh Emm ([inaturalist.org/people/apistopanchax](https://www.inaturalist.org/people/apistopanchax)), nymph

Facts: Animal Diversity Web ([animaldiversity.org](https://animaldiversity.org)); Cypress Creek Ecological Restoration Project ([ccerp.org](https://www.ccerp.org)); Wikipedia ([wikipedia.org](https://www.wikipedia.org))

Sheet created by: Nikolai Artley, December 2022