

WHIRLIGIG BEETLE

COLEOPTERA: GYRINIDAE

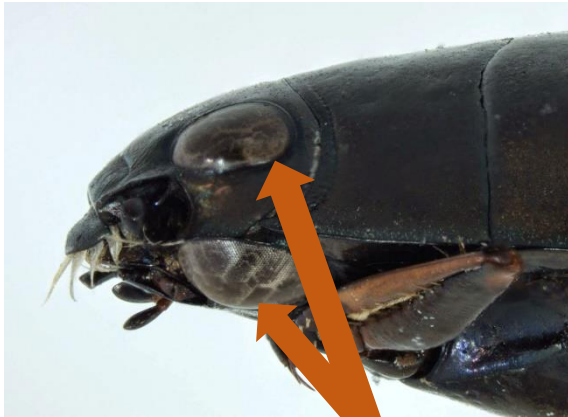


Did you know? Whirligig beetles release a distasteful chemical when fish try to eat them! This functions as self-defense and also alerts nearby beetles to the threat.

Did you know? Whirligig beetles are predators! Larvae live underwater and eat small worms and larval midges, while adults eat things trapped on the water surface (and sometimes other whirligig beetles, too)!

Did you know? The scientific name for whirligig beetles, Gyrinidae, comes from a Greek word meaning “circle” or “spiral”! They got this name because they spin or “whirl” around on the water as they move.

Look and see!



The eyes of whirligig beetles are split: one half sees above the water, and one sees below!



Safety in numbers: whirligig beetles will aggregate on the surface of the water for better protection!



Whirligig beetles can breathe underwater by trapping a bubble of air at the end of their abdomen!



Credits:

Photos: ruebezahl (<https://www.inaturalist.org/people/ruebezahl>), top photo; rtpcuration.blogspot.com, eyes; Jeff Clark (<https://www.inaturalist.org/people/jeffdc>), aggregation; Bob Armstrong, (<https://naturebob.com>), air bubble

Facts: cfb.unh.edu/StreamKey; env-apps.uwaterloo.ca; uwm.edu/field-station

Sheet created by: Nikolai Artley, August 2023