

# Milkweed Bug

Hemiptera: Lygaeidae  
*Oncopeltus fasciatus*



**Did you know?** Milkweed bugs exhibit aposematism—their bright colors warn predators that they are toxic!

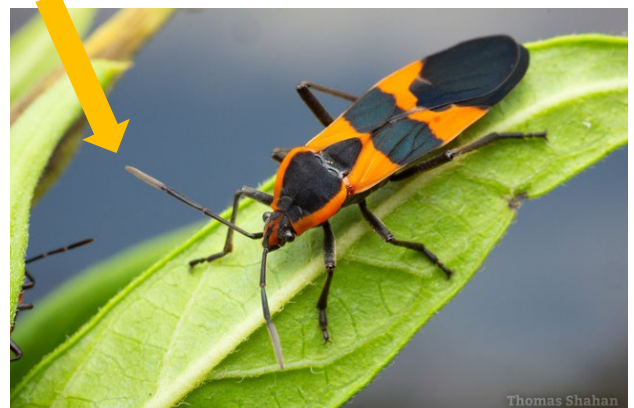
**Did you know?** Milkweed bugs are specialized feeders that rely on the sap of milkweed plants as their main food source. Milkweed sap contains toxins that can be harmful to other insects, but milkweed bugs have evolved to tolerate and capture these toxins, making them toxic to predators.

**Did you know?** Milkweed bugs only live about 30 days, but females can lay up to 2,000 eggs in their lifetime!

## Look and see!



The antennae of milkweed bugs are equipped with tiny sensory structures called sensilla which can detect chemical cues in the environment.



Milkweed bugs undergo three stages of development: the egg stage (1) the nymph stage (2), and adulthood (3)



Credits:

Photos: Katja Schulz ([flickr.com/people/treegrow/](https://www.flickr.com/people/treegrow/)), large milkweed bug; Thomas Shahan ([inaturalist.org/people/tshahan](https://www.inaturalist.org/people/tshahan)), milkweed bug antennae; Reed Andariese ([photoartflight.com](https://www.photoartflight.com)), milkweed bug egg; Mike Powell ([michaelcpowell.com](https://www.michaelcpowell.com)), milkweed bug nymph; M.J. Raupp ([bugoftheweek.com](https://www.bugoftheweek.com)), milkweed bug adult

Facts: Wikipedia ([wikipedia.org](https://www.wikipedia.org)); Missouri Botanical Garden

([missouribotanicalgarden.org](https://www.missouribotanicalgarden.org)); Missouri Department of Conservation ([mdc.mo.gov](https://www.mdc.mo.gov)), NC

State Extension (<https://www.ces.ncsu.edu>)

Sheet created by: Tyler Golbus, August 2023